

## Pneumatic External Vibrators VR 30/VR 25

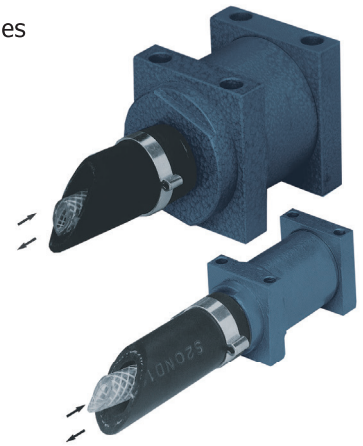
Pneumatic External Vibrators series VR generate rotary vibrations with small amplitudes and high frequencies. The frequency and rotational speed are dependent on the air pressure and can be adjusted continuously.

Minimal maintenance requirements and minimum wear of the external vibrators, as well as its design without bearings, guarantee a reliable operation, especially under extreme duty applications and continuous operation.

The types VR 25 A and VR 30 A are equipped with an additional air supply hose and extract hose (i.e. the escaping air will be conducted via a hose and will not escape directly at the vibrators housing into the environment). The A-types are especially suitable for dosing mortar or for wet-mix shotcrete applications.

**working temperature:** -10°C till + 80°C

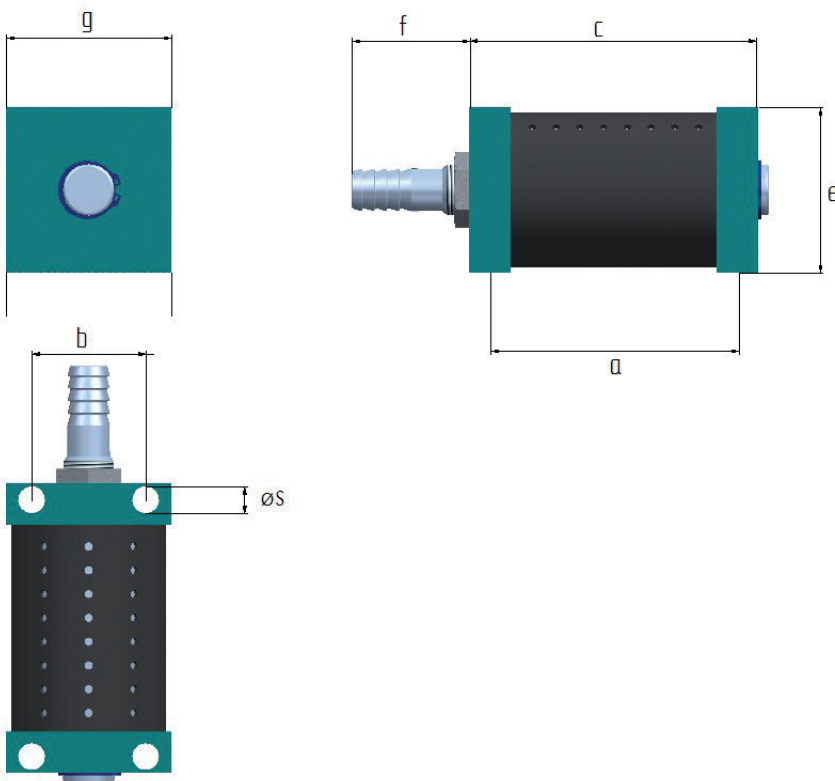
suitable for continuous operation.



type	vibrations <sup>1</sup> min - <sup>1</sup>	centrifugal force <sup>1</sup> N	air consumption <sup>1</sup> m <sup>3</sup> /min.	weight kg	mounting dimensions			overall dimensions			
					a	b mm	øS	c	e mm	f	g
VR 25 / VR 25 A <sup>2</sup>	18,000	4,500	0.9	1	60.7	31.5	6.5	74	42	43	42
VR 30 / VR 30 A <sup>2</sup>	12,000	9,000	1.0	3.5	74	55	12.5	90	80	70	80

<sup>1</sup> measured at 6 bar air pressure.

<sup>2</sup> VR 25 A und VR 30 A with additional extract air hose.



### BENEFITS:

- low weight
- maintenance free
- long lifetime

The above given technical performance data are non-binding average values and are subject to modifications and amendments.