

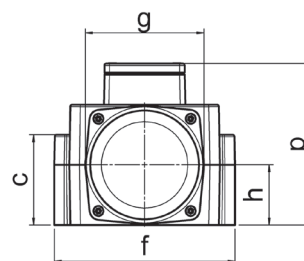
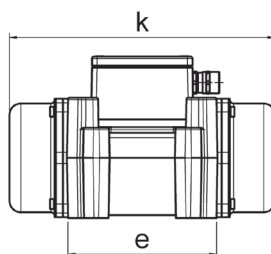
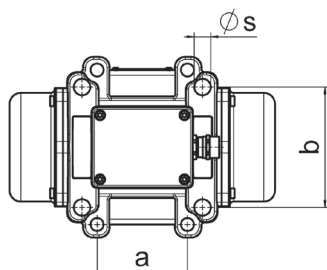


## Vibration Motor for Concrete Precast Elements

The extremely sturdy housing is manufactured from aluminium chill casting. The amply dimensioned bearings are lubricated for life. The centrifugal force can be adjusted stepwise by reducing the centrifugal weights. The vibrator can be run continuously under consideration of the admissible power input.

**standard voltage:** 42 V, 115 V, 250 V / 200 Hz – other voltages are available.  
 protection class IP66 · insulation class F

| type    | synchr. speed<br>min <sup>-1</sup> | centrifugal force<br>N | centrifugal force settings<br>number of slices/side<br>stepless   in steps | standard voltage<br>200 Hz / V | nominal current<br>A | power<br>W | weight<br>kg |
|---------|------------------------------------|------------------------|----------------------------------------------------------------------------|--------------------------------|----------------------|------------|--------------|
| EHF 8/4 | 6,000                              | 12,000                 | 7                                                                          | 3~ 42 / 250                    | 12.0 / 2.0           | 650        | 12.5         |



| type    | bores for fastening <sup>1</sup> (mm) |     |                | base dimensions (mm) |     |     | overall dimensions (mm) |     |     |     |
|---------|---------------------------------------|-----|----------------|----------------------|-----|-----|-------------------------|-----|-----|-----|
|         | a                                     | b   | ∅ <sub>s</sub> | c                    | e   | f   | h                       | k   | g   | p   |
| EHF 8/4 | 90                                    | 154 | 13             | 90                   | 150 | 180 | 61                      | 256 | 118 | 162 |
|         | 120                                   | 120 | 16.5           |                      |     |     |                         |     |     |     |

<sup>1</sup> all mentioned fastening holes are provided in the unit.

The above given technical performance data are non-binding average values and are subject to modifications and amendments.