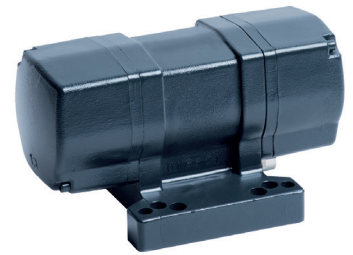


High Frequency Vibration Motor EHF 2

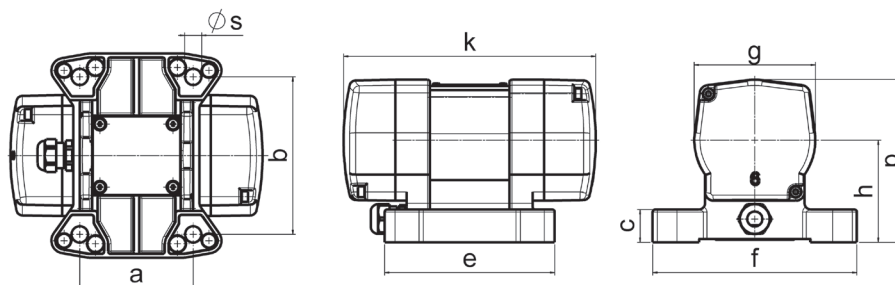
Vibration Motor for Concrete Precast Elements

The extremely sturdy housing is manufactured from aluminium chill casting. The amply dimensioned bearings are lubricated for life. The centrifugal force can be adjusted stepwise by reducing the centrifugal weights. The vibrator can be run continuously under consideration of the admissible power input.



standard voltage: 42 V, 110 V, 250 V / 100 Hz, 200 Hz – other voltages are available.
protection class IP66 · insulation class F

type	synchr. speed	centrifugal force	centrifugal force settings	frequency	nominal current	power	weight
	min ⁻¹	N	number of slices/side stepless in steps		Hz	A	W
EHF 2/2	6,000	3,520	4	100	4.98 / 0.84	350	5.2
EHF 2/4	6,000	3,520	4	200	11.00 / 1.85	550	5.2



type	bores for fastening ¹ (mm)			base dimensions (mm)			overall dimensions (mm)			
	a	b	Ø _s	c	e	f	h	k	g	p
EHF 2/2	65	140	13	25	135	162	80	189	96	128
EHF 2/4	90	125	13							
	115	135	11							

¹ all mentioned fastening holes are provided in the unit.

The above given technical performance data are non-binding average values and are subject to modifications and amendments.