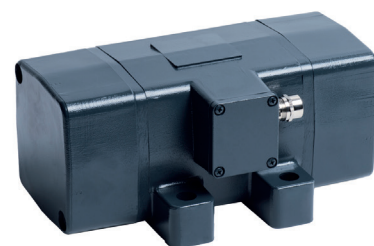


# High Frequency Vibration Motor EHF 15/4



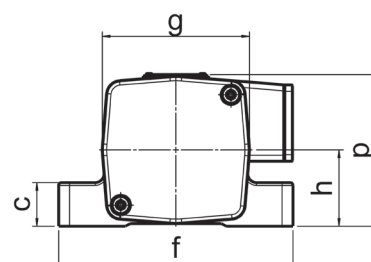
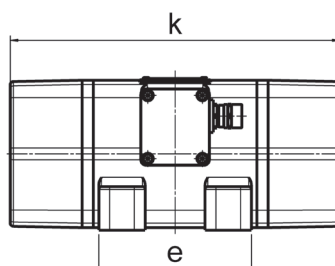
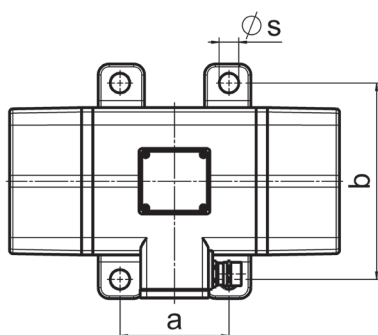
## Vibration Motor for Concrete Precast Elements

The extremely sturdy housing is manufactured from aluminium chill casting. The amply dimensioned bearings are lubricated for life. The centrifugal force can be adjusted stepwise by reducing the centrifugal weights. The vibrator can be run continuously under consideration of the admissible power input.



**standard voltage:** 42 V, 115 V, 250 V / 200 Hz – other voltages are available.  
protection class IP65 · insulation class F

type	synchr. speed min <sup>-1</sup>	centrifugal force N	centrifugal force settings number of slices/side stepless   in steps	standard voltage 200 Hz / V	nominal current A	power W	weight kg
EHF 15/4	6,000	20,000	8	3~ 42 / 250	18.25 / 3.2	1,200	17



type	bores for fastening <sup>1</sup> (mm)			base dimensions (mm)			overall dimensions (mm)			
	a	b	Ø <sub>s</sub>	c	e	f	h	k	g	p
EHF 15/4	100	180	18	40	140	215	70	302	135	180

<sup>1</sup> all mentioned fastening holes are provided in the unit.

The above given technical performance data are non-binding average values and are subject to modifications and amendments.