

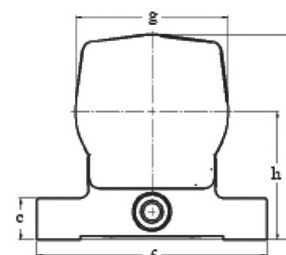
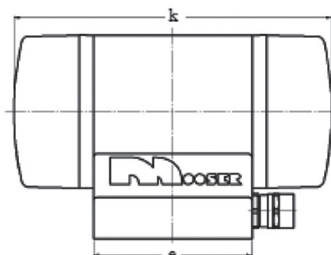
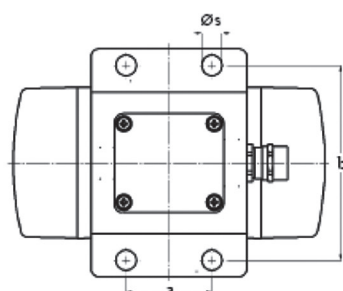


For small above-ground construction sites with low concrete thicknesses where no air compressor is available, the electric formwork vibrators offer a practical alternative.

They are supplied as standard for 230 V with starting capacitor, 6 metres connection cable and plug. Electric formwork vibrators are operated either via a frequency converter¹ (frequency variable from 20 Hz to 70 Hz) or directly from alternating current at 230 V / 50 Hz.

These devices are also available for hire as a cost-efficient alternative.

type	synchr. speed min ⁻¹	centrifugal force N	working moment cm kg	centrifugal force settings number of slice per side stepless in steps	standard voltage 50 Hz / V	nominal current A	power input W	weight kg
VE 2/2-2 BS	3,000	1,100	2.3	5	1~ 230	1.2	170	6.0



type	bores for fastening (mm)			base dimensions (mm)			overall dimensions (mm)			
	a	b	Ø _s	c	e	f	h	g	p	k
VE 2/2-2 BS	55	124	13	26	100	145	80	200	96	128

Frequency Converter for Electric Formwork Vibrator 230 V¹

type	power output kVA	input voltage 50 Hz / V	output voltage 20-70 Hz / V	nominal current A	sockets pcs	weight kg
FR 1.1 ²	1.1	230	230	10	4	10

² optional: with radio control unit.

The above given technical performance data are non-binding average values and are subject to modifications and amendments.