

High Frequency Vibration Motor EHF 6/4



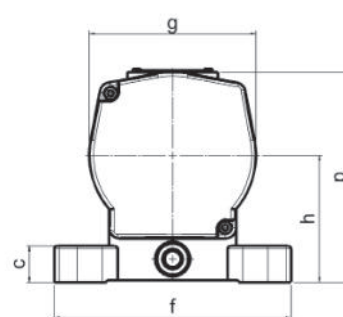
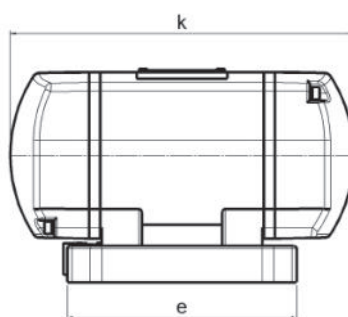
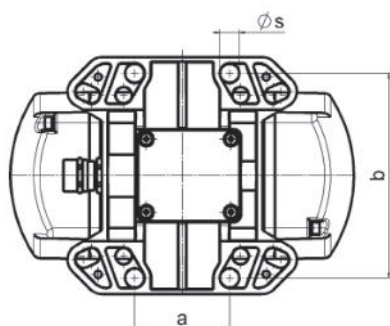
Vibration motor for concrete precast elements

The extremely sturdy housing is manufactured from aluminium chill casting. The amply dimensioned bearings are lubricated for life. The centrifugal force can be adjusted stepwise by reducing the centrifugal weights. The vibrator can be run continuously under consideration of the admissible power input.

standard voltage: 42 V, 110 V, 250 V / 200 Hz – special voltages are available.
 protection class IP65 · insulation class F

External Vibrators

type	synchr. speed min ⁻¹	centrifugal force N	centrifugal force settings number of discs/side stepless in steps	standard voltage V	nominal current A	power W	weight kg
EHF 6/4	6,000	6,100	4	42 / 110 / 250	6.5 / 2.48 / 1.1	475	7.4



type	bores for fastening ¹ (mm)			base dimensions (mm)			overall dimensions (mm)			
	a	b	Ø _s	c	e	f	h	k	g	p
EHF 6/4	65	140	12.5	26	153	160	91	265	114	150
	90	125	12.5							
	115	135	11							
	135	115	11							

¹ all mentioned fastening holes are provided in the unit.

The above given technical performance data are non-binding average values and are subject to modifications and amendments.