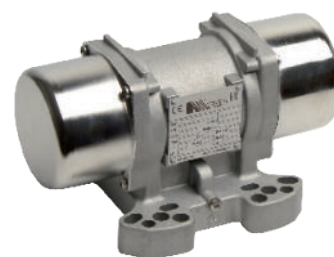


High Frequency Vibration Motor EHF 2

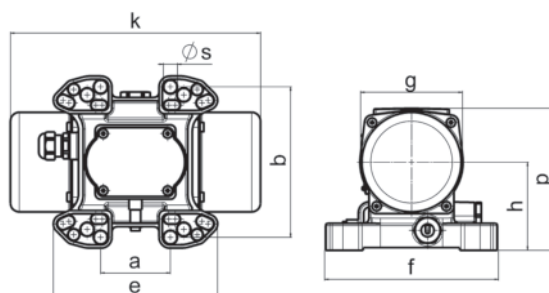
Vibration motor for concrete precast elements

The extremely sturdy housing is manufactured from cast aluminium. The amply dimensioned bearings are lubricated for life. The centrifugal force can be adjusted stepwise by reducing the centrifugal weights. The vibrator can be run continuously under consideration of the admissible power input.

standard voltage: 42 V, 110 V, 250 V / 200 Hz. Special voltages are available.
protection class IP66 · insulation class F



type	synchr. speed	centrifugal force	centrifugal force settings	standard voltage	nominal current	power	weight
	min ⁻¹	N	number of discs/side stepless in steps	V	A	W	kg
EHF 2/2	6,000	3,520	4	42 / 100 / 250	4.98 / 1.9 / 0.84	320	5.9
EHF 2/4	6,000	3,520	4	42 / 110 / 250	11.00 / 4.2 / 1.85	520	5.9



type	bores for fastening ¹ (mm)			base dimensions (mm)			overall dimensions (mm)			
	a	b	Ø _s	c	e	f	h	k	g	p
EHF 2/2	62-74	106	9	25	153	160	87	203	96	137
EHF 2/2	65	140	12.5							
EHF 2/4	90	125	12.5							
	115	135	11							
	124	110	11							
	135	115	11							

¹ all mentioned fastening holes are provided in the unit.

The above given technical performance data are non-binding average values and are subject to modifications and amendments.