

Vibration Motor VE 85

The extremely sturdy housing is manufactured from highly resistant, heat treated aluminium casting. The bearings NJ 409 M C4, NJ 407 M C4 bzw. TMB 6407 C 4 which are lubricated with special grease, ensure optimum operation for a long time.

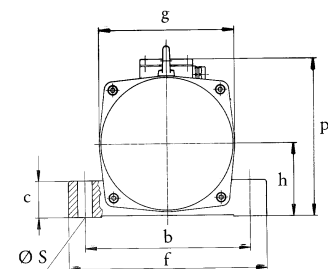
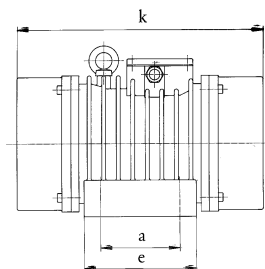
The centrifugal force is infinitely variable.

Taking into consideration the admissible power absorption, the vibrator can be run continuously.

* Exception: HV 85/2-120 with 40% on-time.

- standard voltage 230/400V · 50 Hz
- other voltages available
- protection class IP 65 – insulation class F

type	rotational speed min ⁻¹	centrifugal force N	working moment cm kg	centrifugal force settings			standard voltage 50 Hz * V		nominal current A	power input W
				stepless / in steps						
VE 85/2	3000	43000	86	2	-	3 ~	230/400	12,0 / 6,9	4200	
VE 85/2-120	3000	61000	123	2	-	3 ~	230/400	12,0 / 6,9	4200	
VE 85/4-300	1500	37000	300	2	-	3 ~	230/400	6,4 / 3,7	2000	
VE 85/4-400	1500	50000	397	2	-	3 ~	230/400	6,4 / 3,7	2000	
VE 85/6-400	1000	22000	397	2	-	3 ~	230/400	5,5 / 3,2	1500	
VE 85/8-400	750	12500	397	2	-	3 ~	230/400	3,8 / 2,2	950	



type	mounting dimensions			base dimensions			external dimensions				mass kg
	mm			mm			mm				
	a	b	Ø _s	c	e	f	h	g	p	k	
VE 85/2	100	300	27	70	175	350	150	280	300	385	75
VE 85/2-120	100	300	27	70	175	350	150	280	300	385	80
VE 85/*-300	100	300	27	70	175	350	150	280	300	475	85
VE 85/4-400	100	300	27	70	175	350	150	280	300	485	100
VE 85/*-400	100	300	27	70	175	350	150	280	300	475	95

The above given technical performance data are non-binding average values and are subject to modifications and amendments.