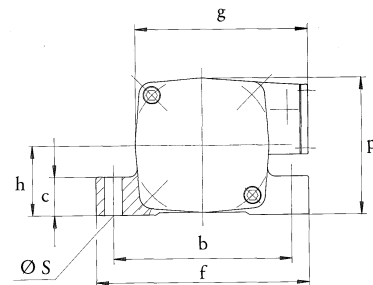
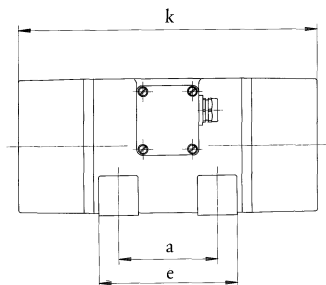


## Vibration Motor VE 30

The extremely sturdy housing is manufactured from highly resistant, heat treated aluminium casting. The bearings NJ 2206 C4, which are lubricated with special grease, ensure optimum operation for a long time. The centrifugal force of the bipolar vibrator can be regulated stepwise by means of mountable eccentric weights. The other vibrator types are infinitely variable. Taking into consideration the admissible power absorption, the vibrator can be run continuously.

- standard voltage 230/400V · 50 Hz
- other voltages available
- protection class IP65 – insulation class F

type	rotational speed  min <sup>-1</sup>	centrifugal force  N	working moment  cm kg	centrifugal force settings		standard voltage		nominal current  A	power input  W
				stepless / in steps		50 Hz  *  V			
VE 30/2	3000	16500	32	-	14	3 ~	230/400	2,9 / 1,7	1000
VE 30/4-75	1500	9800	78	2	-	3 ~	230/400	2,5 / 1,43	800
VE 30/6-75	1000	4300	78	2	-	3 ~	230/400	2,1 / 1,2	550
VE 30/8-75	750	2450	78	2	-	3 ~	230/400	1,65 / 0,95	370



type	mounting dimensions			base dimensions			external dimensions				mass kg
	mm			mm			mm				
	a	b	Ø <sub>S</sub>	c	e	f	h	g	p	k	
VE 30/2	100	200	18	50	140	235	82	195	161	330	22,5
VE 30/*-75	100	200	18	50	140	235	82	195	161	430	31

The above given technical performance data are non-binding average values and are subject to modifications and amendments.