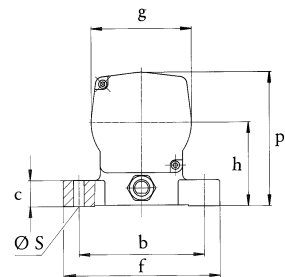
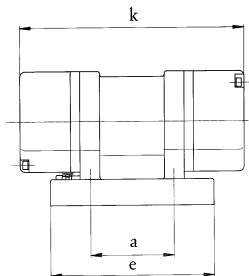


Vibration Motor VE 2

The sturdy housing is manufactured from aluminium chill casting. The amply dimensioned bearings 6302 ZZ C4 are lubricated for life. The centrifugal force can be changed stepwise by taking off the eccentric weights. The vibrator can be run continuously with all the eccentric weights mounted, taking into consideration the admissible power consumption.

- standard voltage 230/400V· 50Hz
- other voltages are available
- protection class IP65 – insulation class F
- These bipolar units are also available as extra executions of 230V, 50Hz A.C. In this case, an operation capacitor of 7µF can be provided.

type	rotational speed upm	centrifugal force N	working moment cm kg	centrifugal force settings in steps	standard voltage		nominal current A	power input W
					50-60 Hz * V			
VE 2/2	3000	880	1,85	4	3 ~	230/400	0,49 / 0,29	160
VE 2/2-2	3000	1320	2,8	6	3 ~	230/400	0,49 / 0,29	160
VE 2/2-4	3000	1760	3,7	8	3 ~	230/400	0,49 / 0,29	160
VE 2/2-6	3000	2860	6,0	13	3 ~	230/400	0,49 / 0,29	160
VE 2/4	1500	220	1,85	4	3 ~	230/400	0,57 / 0,33	140
VE 2/4-2	1500	330	2,8	6	3 ~	230/400	0,57 / 0,33	140
VE 2/4-4	1500	440	3,7	8	3 ~	230/400	0,57 / 0,33	140
VE 2/4-6	1500	715	6,0	13	3 ~	230/400	0,57 / 0,33	140
VE 2/4-9	1500	1100	9,0	20	3 ~	230/400	0,57 / 0,33	140



type	mounting dimensions mm			base dimensions mm			external dimensions mm				mass kg
	a	b	Ø _S	c	e	f	h	g	p	k	
VE 2/*	65	140	13	25	157	162	80	96	128	189	5,2
VE 2/*-8	80	110	11	25	157	162	80	96	128	201	5,5
VE 2/*-4	115	135	11	25	157	162	80	96	128	215	6,0
VE 2/*-6	135	115	11	25	157	162	80	96	128	250	6,7
VE 2/*-9	124	110	11	25	157	162	80	96	128	283	7,7

The above given technical performance data are non-binding average values and are subject to modifications and amendments.