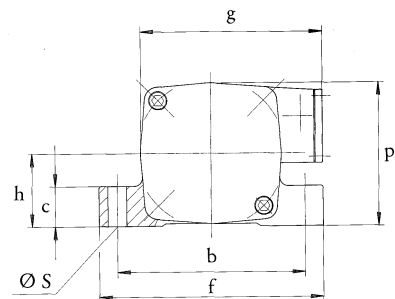
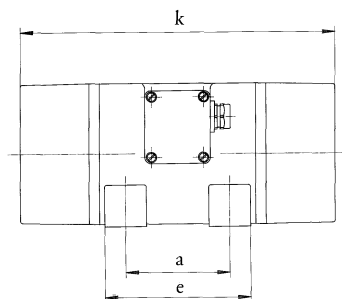


## Vibration Motor VE 15

The extremely sturdy housing is manufactured from highly resistant, heat treated aluminium chill casting. The bearings TMB 305 C4 and NJ 2305 E C4 are lubricated with special grease to ensure optimum operation for a long time. The centrifugal force can be changed stepwise by taking off the eccentric weights. The vibrator can be run continuously taking into consideration the admissible power input.

- standard voltage 230/400V · 50 Hz
- other voltages available
- protection class IP 65 – insulation class F

type	rotational speed $\text{min}^{-1}$	centrifugal force N	working moment cm kg	centrifugal force settings		standard voltage 50 Hz		nominal current A	power input W
				-		3 ~	V		
VE 15/2	3000	7500	15	-	10	3 ~	230/400	2,16 / 1,25	650
VE 15/2-20	3000	10500	21	-	14	3 ~	230/400	2,7 / 1,55	900
VE 15/2-25	3000	12600	25	-	10	3 ~	230/400	2,7 / 1,55	900



type	mounting dimensions mm			base dimensions mm			external dimensions mm				mass kg
	a	b	Ø <sub>s</sub>	c	e	f	h	g	p	k	
VE 15/2	100	180	18	40	140	215	70	175	138	303	16,3
VE 15/2-20	100	180	18	40	140	215	70	175	138	350	18
VE 15/2-25	100	180	18	40	140	215	80	186	159	330	19

The above given technical performance data are non-binding average values and are subject to modifications and amendments.