

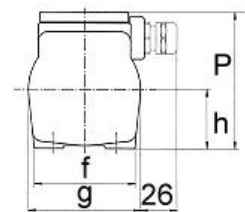
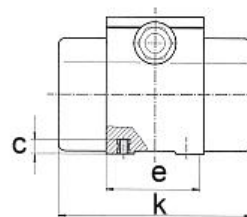
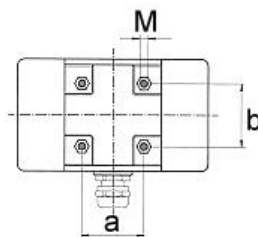
## Vibration Motor VE 0,8/2

These units have been devised for use where only a small space is available. Typically for assembly of two vibrators in conveying channels. These units are mounted from the lower side through threaded bores.

The sturdy housing is manufactured from aluminium chill casting. The amply dimensioned bearings 629 ZZ C3 are lubricated for life. The centrifugal force can be changed stepwise. The vibrator can be run continuously with all the eccentric weights mounted, taking into consideration the admissible power consumption.

- standard voltage 400V · 50Hz
- other voltages are available
- protection class IP65 – insulation class F
- for operation with 230V A. C. power supply source an operating capacitor of 2µF can be provided

type	rotational speed  min <sup>-1</sup>	centrifugal force  N	working moment  cm kg	centrifugal force settings		standard voltage  50-60 Hz  *  V		nominal current  A	power input  W
				-	4	3~	400		
VE 0,8/2	3000	400	0,8	-	4	3~	400	0,1	50



type	mounting dimensions			base dimensions			external dimensions				mass kg
	mm			mm			mm				
	a	b	∅ <sub>s</sub>	c	e	f	h	g	p	k	
VE 0,8/2	45	45	6	10	70	72	42	80	97	138	2,2

The above given technical performance data are non-binding average values and are subject to modifications and amendments.