

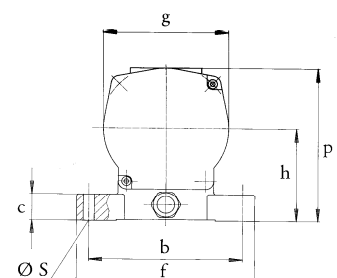
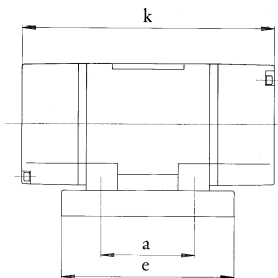
D.C. Vibration Motor VE 6 GL

D.C. vibrators are used for machines and equipment which work with internal combustion engines. Power requirements of 12 or 24 volts will be supplied by battery.

The housing of these vibrators is manufactured from aluminium chill casting. The centrifugal force can be changed stepwise by mountable eccentric weights.

- protection class IP65 – insulation class F

type	rotational speed upm	centrifugal force N	working moment cm kg	centrifugal force settings		standard voltage 50-60 Hz * V	nominal current A	power input W
				-	5			
VE 6 GL	3300	1400	2,35	-	5	12	1	120
VE 6 GL	3300	1400	2,35	-	5	24	7	168



type	mounting dimensions mm			base dimensions mm			external dimensions mm				mass kg
	a	b	Ø _S	c	e	f	h	g	p	k	
	65	140	13								
	80	110	11								
VE 6 GL	115	135	11	25	157	162	86	114	144	240	7,2
	135	115	11								
	124	110	11								

The above given technical performance data are non-binding average values and are subject to modifications and amendments.